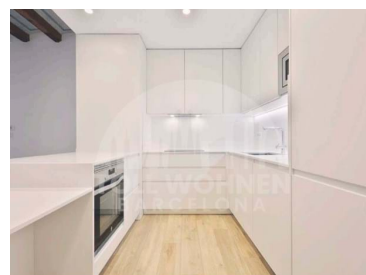




## Barcelona - Apartment



 **2** Bedrooms
  **2** Bathrooms
  **100** Area (m<sup>2</sup>)
 **500 000 €**  
(EUR €)

## Spectacular apartment in Barcelona's Emblematic Gothic Quarter

Spectacular Building in Barcelona's Iconic Gothic Quarter

Located in the heart of Barcelona's iconic Gothic Quarter, just a few metres from Plaça Sant Jaume, the Cathedral and the famous Ramblas, is this impressive listed building. The property has undergone a comprehensive refurbishment, carried out with top quality materials that guarantee luxury and comfort in every detail.

### Building Features:

The building consists of five floors, one per floor, which offers unique exclusivity and privacy to each home. Each floor features balconies that overlook Escudellers Street, providing enchanting views of the vibrant urban environment. In addition, access to each home is made directly from the elevator



**Inna Drokina**

+34 638 130 283

idrokina@toll-wohnen.es

T +34 690807342 · T Calle Ausias Marc 14, BCN · E info@toll-wohnen.es

Av. Matadepera 149 1o  
AMI B05483482

<sup>1</sup> (Call to national fixed network) | <sup>2</sup> (Call to national mobile network)



through an exclusive code, ensuring maximum safety and comfort.

### Design and Quality:

The modern-style renovation has been able to preserve the original architectural elements of the building, such as the high ceilings, which add a touch of grandeur and character to each space. The high-quality finishes give the apartments a cosmopolitan and elegant image, making each home a luxury retreat in the heart of the city.

### Floor Layout

Each floor is designed to offer maximum comfort and functionality:

#### 100m2 apartment

**Bedrooms:** 2 double bedrooms with fitted wardrobes, one of them en suite with bathroom. The spaces are spacious and bright, designed to provide optimal rest and privacy.

**Bathrooms:** 2 full bathrooms, equipped with the best finishes and modern accessories, offering a space for relaxation and daily well-being.

**Living Room:** A spacious and cozy living room, perfect for receiving guests or enjoying moments of tranquility.

**Open Kitchen:** Fully equipped with high-end appliances, including induction hob, microwave, oven, dishwasher and fridge. In addition

It has a column for the installation of a washing machine and dryer, facilitating the organization of the home.

### Comfort and Technology:

To ensure maximum comfort, each floor has soundproofed windows that ensure a quiet environment without external noise. The air conditioning and hot water supply are carried out by means of an aerothermal, efficient and environmentally friendly system. In addition, each home is equipped with an alarm system and all the facilities are completely new, offering the peace of mind of a modern and safe home.

### Conclusion

This building in the Gothic Quarter of Barcelona represents a unique opportunity to live in a historic and vibrant area, with all the comforts and luxuries of a modern home. The combination of its privileged location, elegant design and high-quality finishes, make each apartment a jewel in the heart of the city. Ideal for those looking for an exclusive residence, with direct access to the rich culture and urban life that Barcelona has to offer. Don't miss the opportunity to live in this historic enclave, where the past and the present merge to offer you the best of both worlds. Come and



**Inna Drokina**

+34 638 130 283

idrokina@toll-wohnen.es

**T +34 690807342 · T Calle Ausias Marc 14, BCN · E info@toll-wohnen.es**

**Av. Matadepera 149 1o**

**AMI B05483482**

<sup>1</sup> (Call to national fixed network) | <sup>2</sup> (Call to national mobile network)



TWB303

Reference

Scan the QR code to view the property



discover your new home in Barcelona's Gothic Quarter!

## Property Features

- Built year: 1900
- Floors: 5
- Lift



**Inna Drokina**

+34 638 130 283

idrokina@toll-wohnen.es

**T +34 690807342 · T Calle Ausias Marc 14, BCN · E info@toll-wohnen.es**

**Av. Matadepera 149 1o  
AMI B05483482**

<sup>1</sup> (Call to national fixed network) | <sup>2</sup> (Call to national mobile network)